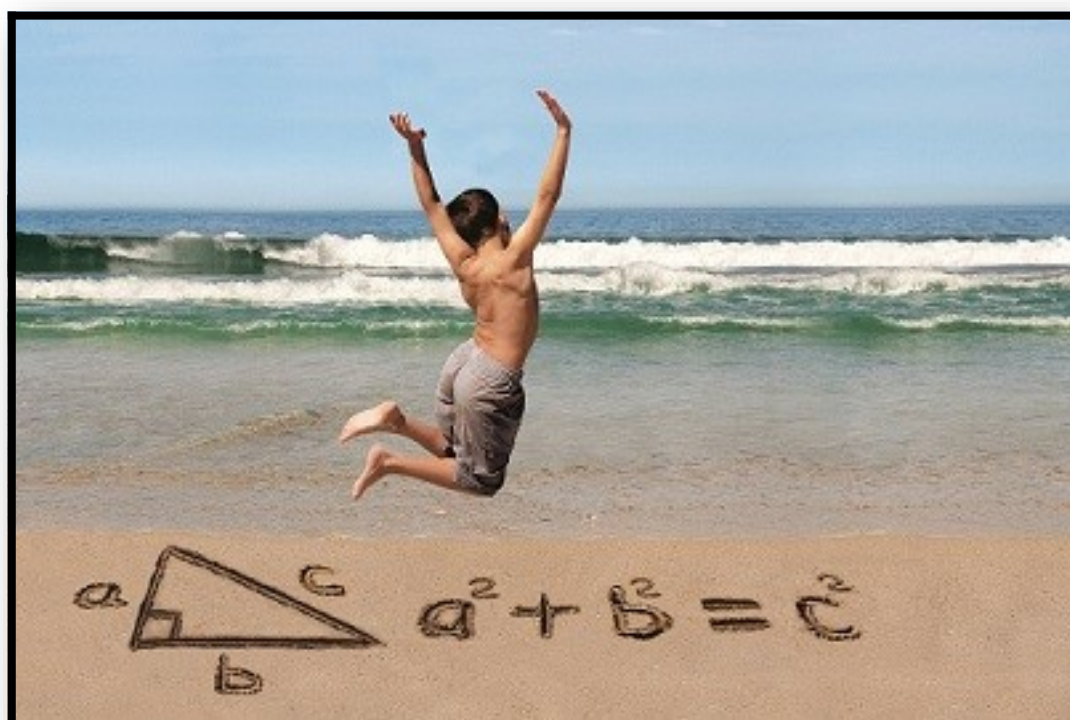


Name: _____

Date: _____

MATHS -Summer Holidays Revision Pack

Year 11-Foundation



Teacher's Assessment

Red	Amber	Green

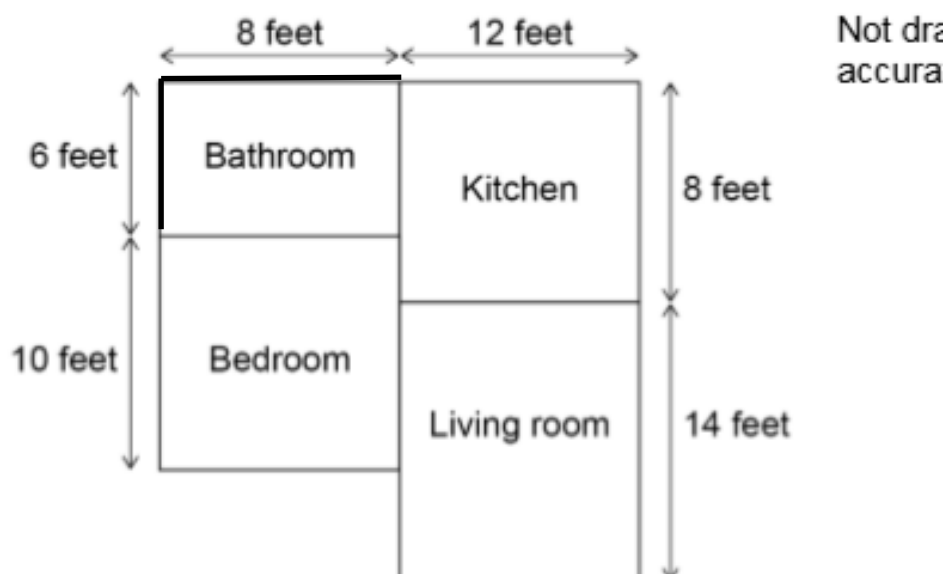
Self-Assessment



My Parent/Carer Comment::

My Teacher Comment:

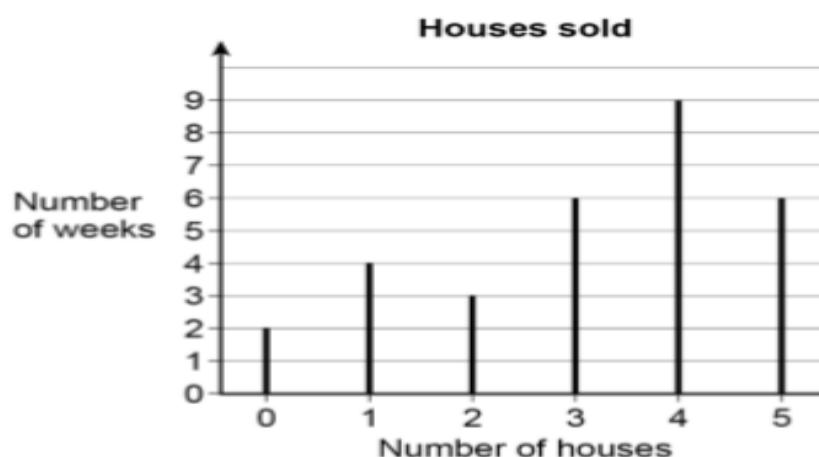
- 1 Here is a plan of a flat with four rectangular rooms.



On the grid on the opposite page, make an accurate scale drawing of the plan.
Label each room.

Use a scale of 1 cm represents 2 feet

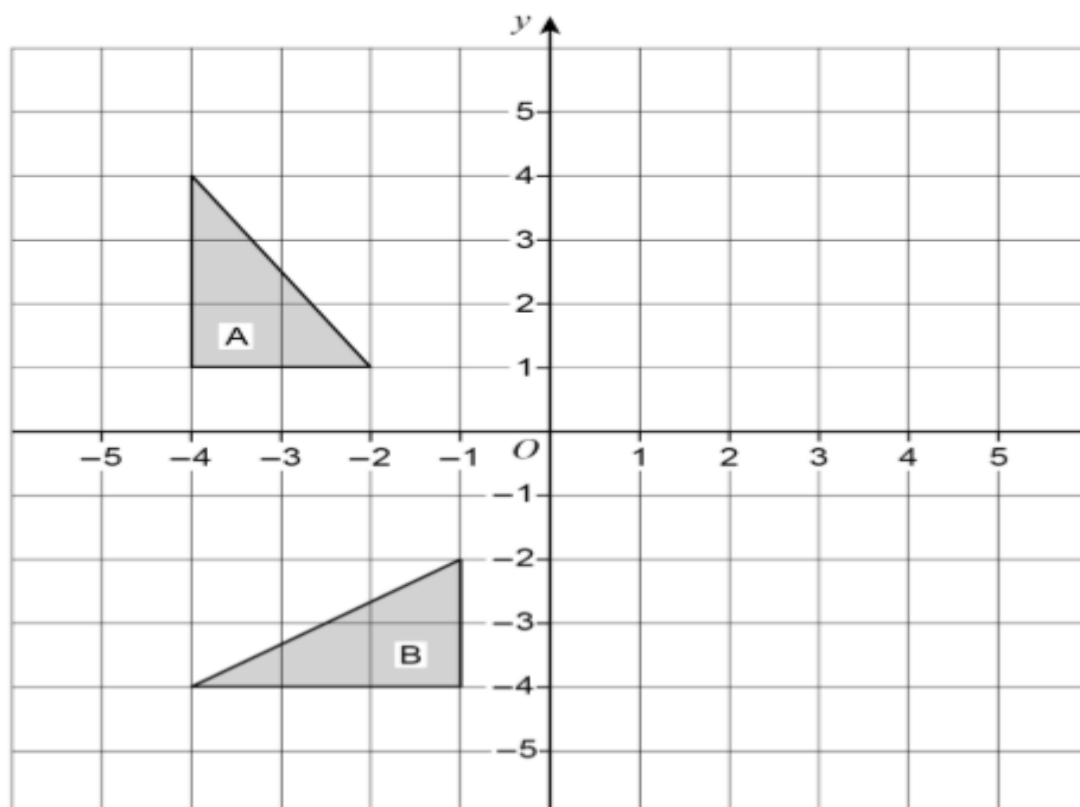
- 2 A company sells houses.
The line graph shows the number sold per week for 30 weeks.



- (a) Work out the range of the number of houses sold per week.

Answer

- 3 Describe fully the **single** transformation that maps shape A to shape B.



- 4 Here is a map of Cuba.
1.5 cm represents 200 km



Work out the actual distance from Havana to Holguin.

Answer _____ km

5

What is the angle of turn clockwise from South West to East?



Circle your answer.

45°

135°

225°

315°

(a) Complete the bank statement.

6

Date	Description	Credit (£)	Debit (£)	Balance (£)
01/09/18	Starting balance			1140.79
06/09/18	Car repairs		256.00	_____
17/09/18	Gas bill		87.31	_____
24/09/18	Salary	2069.75		_____

(b) Write down the meaning of 'Debit' as used in the bank statement.